



forever LP  
product catalog





## Creating with Confidence: The Forever LP Foot and the Road to Recovery

levitate forever LP

Vladislav Blazhchuk is a 30-year-old artist and former soldier from Ukraine. He lost his leg after stepping on a landmine — a life-changing injury that could have ended his creative journey.

But Vladislav, who has been a passionate ceramicist since 2012, found that returning to his craft became a vital part of his recovery, helping him regain focus and purpose.

Today, with the Levitate Forever LP — our low-profile prosthetic foot — Vladislav is back in the studio: lifting heavy molds, teaching classes, and creating with confidence. “The profession of a ceramist is not just sitting at a potter’s wheel. It is constant movement. One mold weighs 28 kilos.

“Thanks to this foot, I can do my job without any problems, just like before my injury,” he says.

The flexibility and stability provided by the Forever LP make it possible for him to perform his work with precision and ease.

But recovery didn’t stop in the studio. Vladislav also returned to the gym, rebuilding both his physical strength and mental resilience through movement. He didn’t let any limitations hold him back. “When I’m working with clay or training at the gym,” he says, “I don’t think about what I’ve lost. I think about everything I’ve rebuilt.”



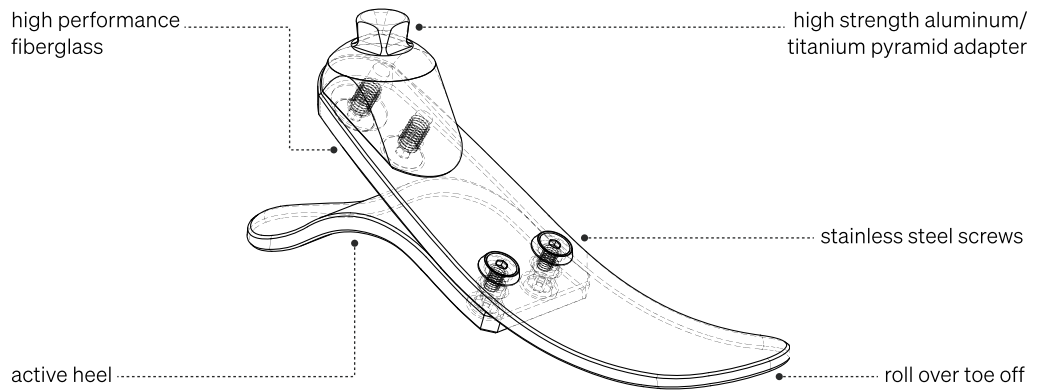
# Introducing the Forever LP: A low-profile prosthetic foot engineered for balance and comfort

## overview

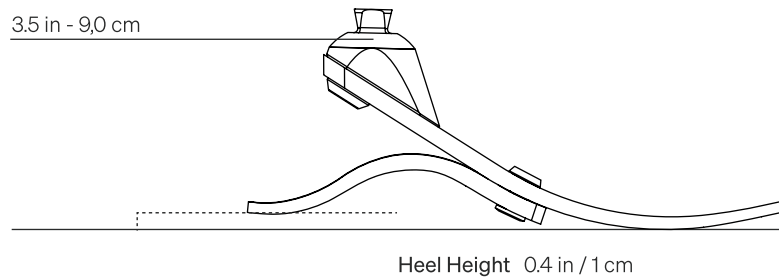
The Levitate **Forever LP** is ideal for users with limited clearance who prioritize comfort, stability, and reliability without sacrificing style or performance. Built with Levitate's signature lightweight fiberglass, it offers smooth energy return, impact absorption, and all-terrain adaptability for walking, everyday movement, and even light sports.

- **Smooth Rollover Mechanics:** Curved fiberglass spring and active heel ensure natural, fluid transitions for a dynamic walking experience.
- **Active heel and flexible toe:** Provides exceptional energy return and mobility - rarely seen in a low profile design.
- **Elegant Design:** Discreet and stylish profile fits seamlessly with formal or casual clothing.
- **Traction Footshell:** Compatible with the Levitate Traction Footshell.

## build structure



## build height



## footshells

Footshell - Traction

Footshell - Beige

Footshell - Black



## user & product info

Max body weight	Weight	Sizes
125 kg	380* g	23 - 29 cm

\*Specifications refer to Forever LP size 27 weight range 65-80 kg without footshell



**Category selection** - Applies to Forever LP

size & category chart

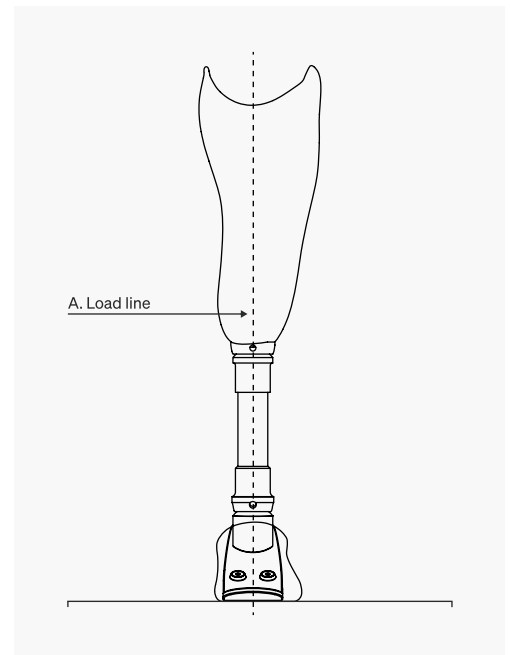
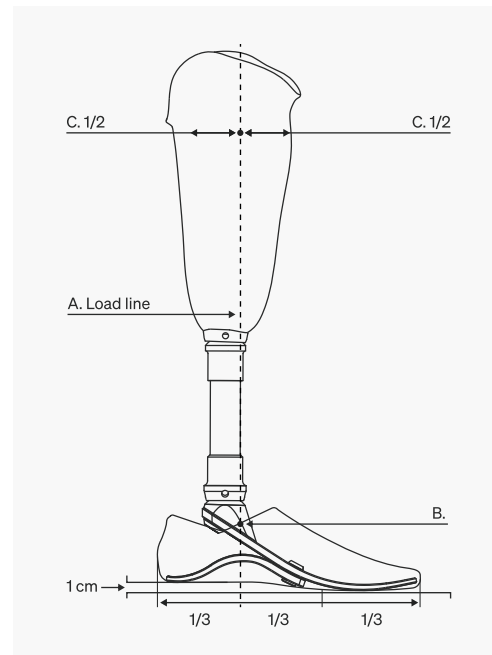
Body Weight		Sizes		
Weight in kg	Weight in lbs	23 - 24	25 - 26	27 - 29
35 - 50	77 - 110	Category 1	Category 1	N/A
50 - 65	110 - 143	Category 1.5	Category 1.5	Category 1.5
65 - 80	143 - 176	Category 2	Category 2	Category 2
80 - 95	176 - 210	Category 2.5	Category 2.5	Category 2.5
95 - 110	210 - 242	N/A	Category 3	Category 3
110 - 125	242 - 275	N/A	Category 3.5	Category 3.5

Depending on the user's activity level, you can go one category higher or lower.

bench alignment

Sagittal plane alignment

Frontal plane alignment



attributes & guidelines

Assemble the prosthetic leg to the socket with the necessary adapters to match the required build height.

**Sagittal alignment:**

- Align the prosthetic such that the load line (A) passes through the inner third of the foot cover (B) and the midpoint of the socket (C) at the patellar tendon level for TT/BKA or the ischial tuberosity level for TF/AKA.
- Consider socket flexion/extension.
- Consider shoe heel height.

**Frontal alignment:**

- Consider socket abduction/adduction.

\* When using a prosthetic knee, align it following the manufacturer instructions.

Perform a static and dynamic alignment in collaboration with the patient and adjust the prosthetic accordingly to ensure a smooth rollover and a natural gait cycle.



Forever LP

product images



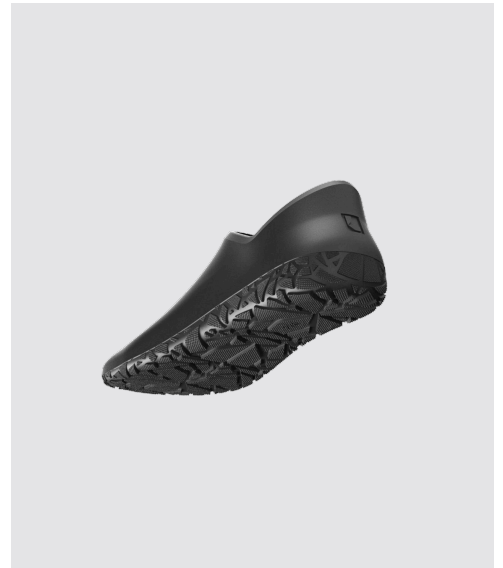


## Traction footshell

### overview

Engineered for performance and everyday reliability, the Traction footshell is the latest innovation for the Forever LP. Featuring a streamlined, technical design, it offers enhanced grip, long-lasting durability, and waterproof protection—delivering dependable function in a wide range of daily environments.

### product images



### key features

- **Exceptional Grip:** Designed to be worn inside a shoe, Traction provides secure grip and responsive support during high-activity use.
- **Technical Aesthetic:** Made in a bold black finish and minimal design, Traction breaks away from the traditional look of footshells.
- **Waterproof Design:** Built for wet environments, Traction features a fully waterproof design that maintains comfort and performance in and around water. Integrated drain holes let water flow through easily—ideal for barefoot use at home, by the pool, on the terrace, or at the beach.



Forever LP with Traction footshell

product images



Levitte  Freedom to Play



L5981